

## Numeracy

### Place value and number:

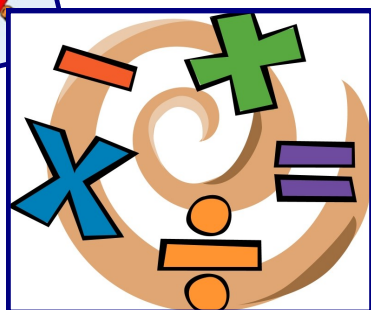
The children will be counting forwards and backwards to 100 and beyond, We will be comparing numbers, partitioning into tens and ones, ordering numbers and finding one more and one less than a given number.

We will use practical and pictorial methods such as grouping, making numbers using tens and ones to help children understand the concept behind addition, subtraction, multiplication and division.

The children will learn how to tell the time to the hour and half past, we will visit position and direction as well as money.

Furthermore, we will practise all number pairs that makes each number up to 10 and 20. We will also look at the tens pairs that add up to 100. As well as this, we will be starting to learn our 2, 5 and 10 times tables.

Lastly, we will apply our learning to everyday situations by solving problems.



## Literacy

### Guided Reading:

Every day children will be set a reading task. Once a week your child will read with the class teacher and/ or Teacher Assistant as part of their Guided Reading.

Children will bring their reading books on Tuesdays and take it home with them on Fridays. Please ensure that you listen to your child read each week and record this in their reading record.

Our author focus this term is **Lauren Child**. We will be reading and comparing books by this author.

### Writing Focus:

Our writing stimuli will come from different texts that will enrich children's vocabulary and stimulate their imagination. We will be covering different genres like poetry, recounts, postcards and letters and descriptive writing. We will encourage the children to continue using the capital letters, finger spaces and full stops.



Benthal Primary School

Learners

Achievers

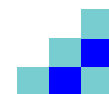
Friends

## Curriculum Information Autumn Term 2020



Year 2

Rowan





## PSHE

This term we are exploring our feelings, learning to name different emotions and placing them on a color chart to help us understand how they make us feel. We will also learn different ways of calming down and getting back to green (Good to Go), including some mindfulness techniques. This is called Zones of Regulation.

Our PSHE unit explores the Very Important Persons (VIPs) in the children's lives and the ways in which they can develop positive relationships with them. It enables them to identify what makes someone a special person in their life and who these are.

## Art+ Design and Technology

Our artist this term is Pier Mondrian. We will explore the history of aboriginal artists and art and the children will create their own aboriginal art. In D&T, our artist is Shari Lewis. The children will be focusing on creating their own puppets.

## ICT

This term, the children will learn how to type effectively and they will continue to focus on coding via purple mash. The children will be allocated their own individual log-ins.

## Year 2 Curriculum Information Autumn

### SCIENCE

#### Living Things and their Habitats

This term we will learn about different habitats and the animals that live there and simple food chains.

The children will also learn about adaptation and how to differentiate between living, non- living and dead things.

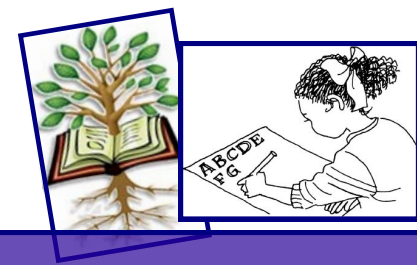
### RE

This term, we will be looking at **Hinduism** and **Judaism**. The children will be exploring the different beliefs and celebrations such as Diwali and Hanukkah .

### Physical Education

**Rowan class will have PE on Mondays and Thursdays.**

The children **need** to bring in PE clothing. This consists of: a white t shirt or a sweatshirt, black shorts or tracksuit bottoms and black trainers or plimsolls. Their PE clothing can be left on their peg and collected at the end of the week..



## BCC

#### Journeys into the Unknown

This term, our topic is **Journeys into the Unknown**, where children will be learning and comparing different destinations.

We will be also making different modes of transport like trains, rockets, aeroplanes, buses and cars.

Geography:

The children will use simple compass directions and directional language to describe the location of features and routes on maps. They will explore localities using aerial maps. They will name the continents/oceans of the world and learn how to find them on an atlas.

### Homework

Homework will be given out on Fridays and will need to be returned on the due date (written in bold on the homework sheet). They will receive their home learning projects with 6 weeks worth of homework. They will need to complete one task from the section over a course of 2 weeks.

Please ensure your child completes their homework as independently as possible and hands it back on the due date.